

# HABITUATED BEARS (Brasov and Sinaia)

---



## **Authors:**

drd. ing. Ramon Jurj – ICAS Braşov  
dr. ing. Ovidiu Ionescu – ICAS Braşov  
dr. ing. Georgeta Ionescu – ICAS Braşov  
ing. Marius Popa – ICAS Braşov  
ing. Vişan Daniel – ICAS Braşov  
ing. George Sîrbu – ICAS Braşov  
biol. Claudiu Paşca – ICAS Braşov  
tehn. Marius Scurtu – ICAS Braşov  
tehn. Ilie Popescu - ICAS Brasov

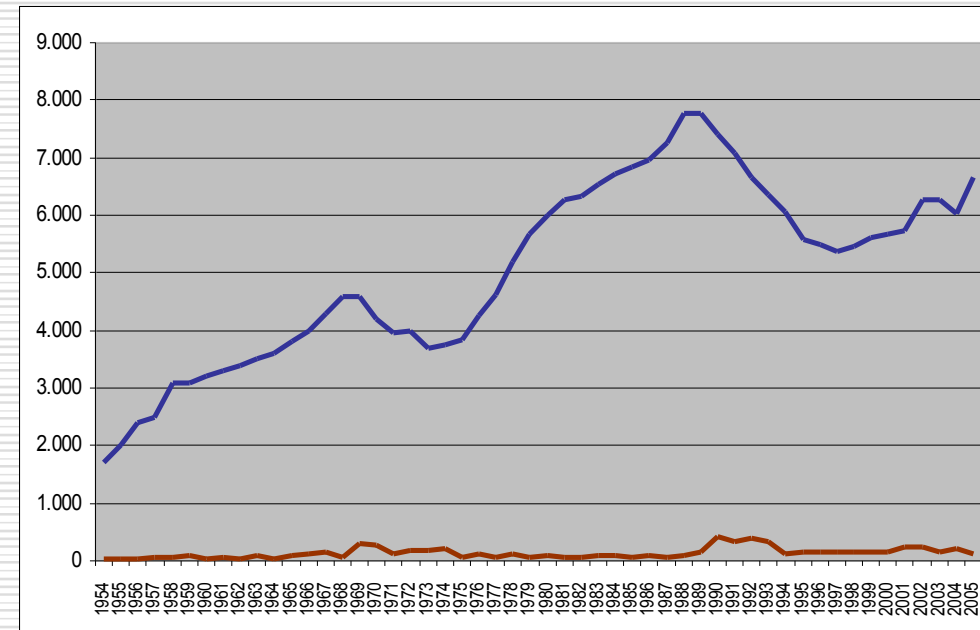
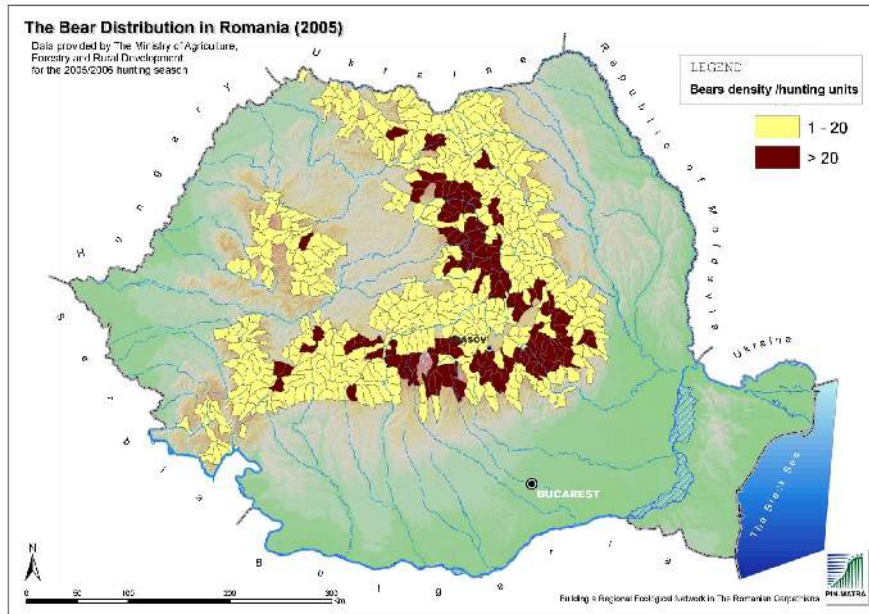
# Introduction

---

- International projects:
  - **GSA** – „Bear Ethology Around Romania”,
  - **WSPA** - „ Habituated bears in Racadau – Rehabilitation and wildlife management”,
  - **RUFFORD** – „Habituated bears in Romania – a challenge for Romanian Wildlife Management ”,



# Official estimations of bear population in the last 50 years



# Habituated bears – deviated feeding behavior

---

- *The habituated bears are the bears that are used with humans presence.*
- *They do not search for food in their natural environment, but they look for food close to human settlements, for an easy accessible food sources.*



# The issues of habituated bears

---

- The issues related to habituated bears cover a wide range of aspects:
  - the security of human population that live in habituated bears areas,
  - conservation of the ethological and ecological characteristics of the species protected under EU legislation,
  - waste management in urban areas.



# Brasov - Racadau

---

Racadau area and the garbage platforms visited by bears

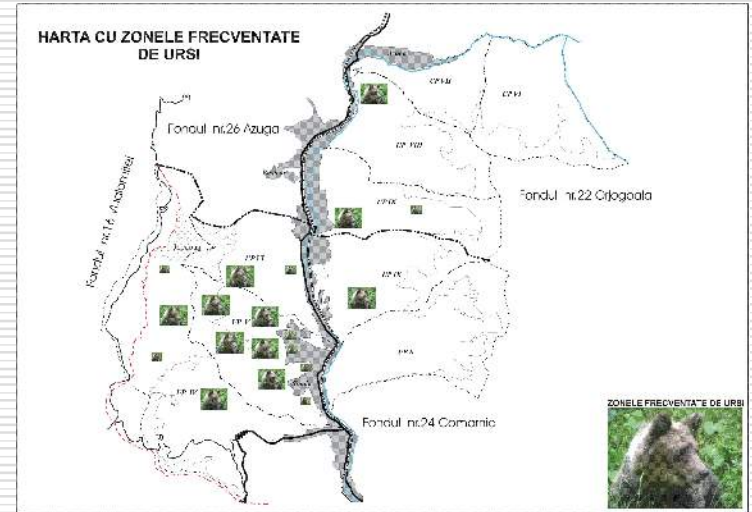
## □ Bears estimation

- 1990-1995: 5 bears
- 1996-1997: 10 bears
- 1998-2000: 15 bears
- 2001-2003: 20 bears
- 2004: 35 bears
- 2005: 40 bears
- 2006: 42 bears
- 2007: 3 bears – Relocated 28 bears
- 2008: 15 bears – Relocated 13 bears
- 2009: 7 bears



# Prahova Valley - Sinaia

- : Bears estimation
- 2006: 28 bears
- 2007: 30 bears
- 2008: 36 bears - Relocated 11 bears
- 2009: 50 bears - Relocated 20 bears



# Study methodes and activitis

---

- - direct observation

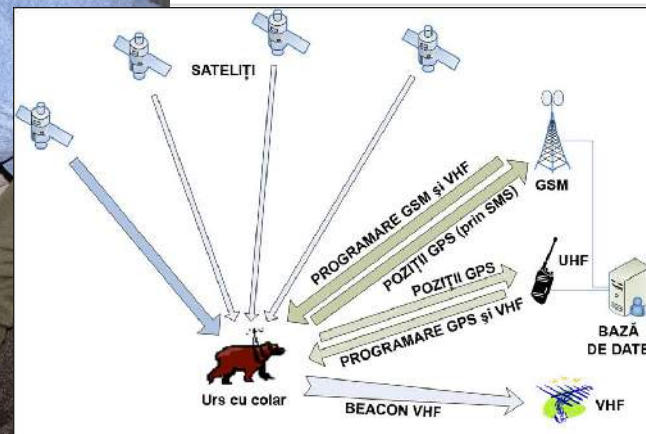




- - results of the behaviour
- 



- capturing and marking with a GPS collar of a bears released in the wilderness and monitored by using GSM, GPS, VHS.



- patrols by using students, polices and volunteer teams

---



- Change of the garbage management

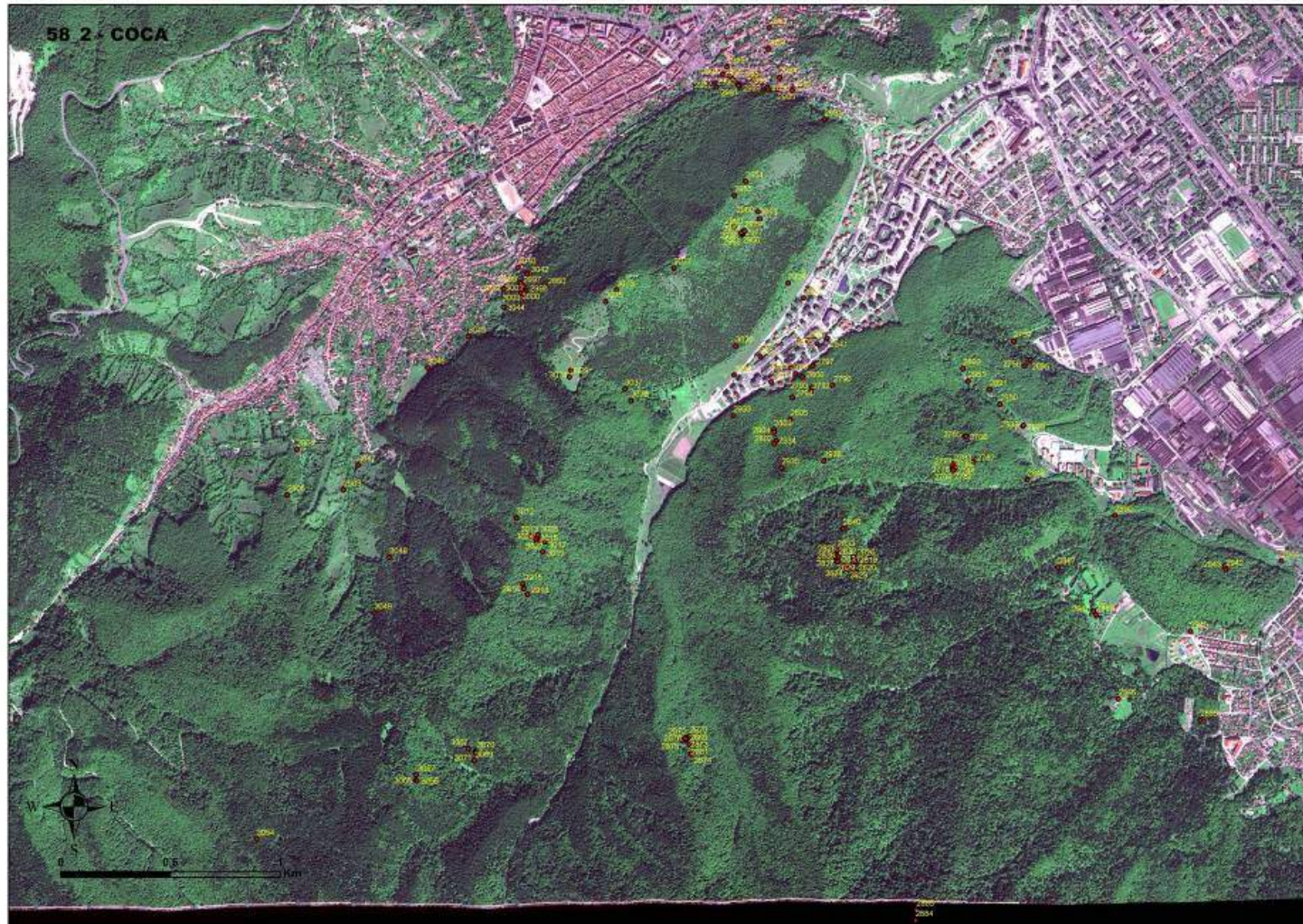
---



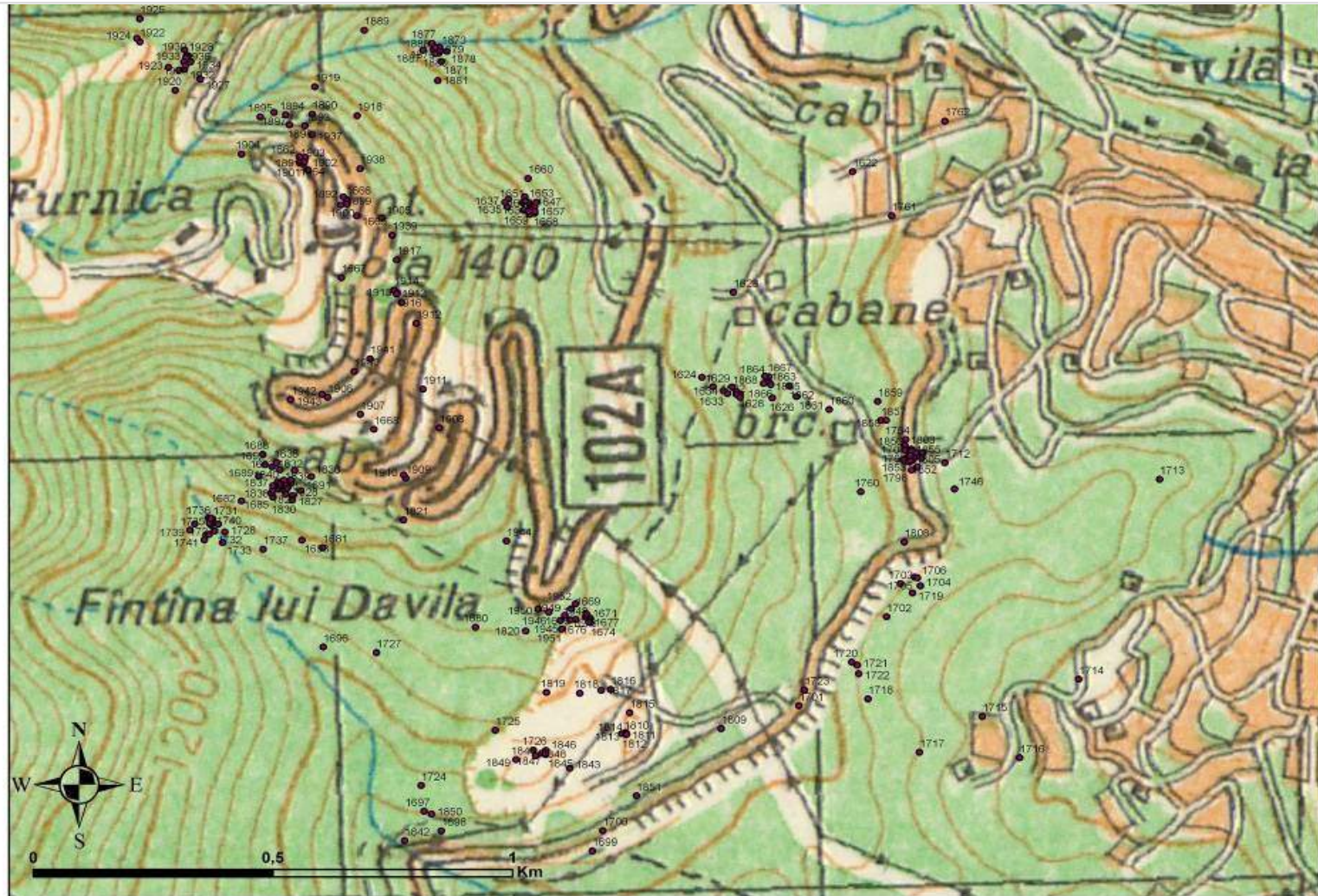




# Weekly activities for bear behavior in Brasov

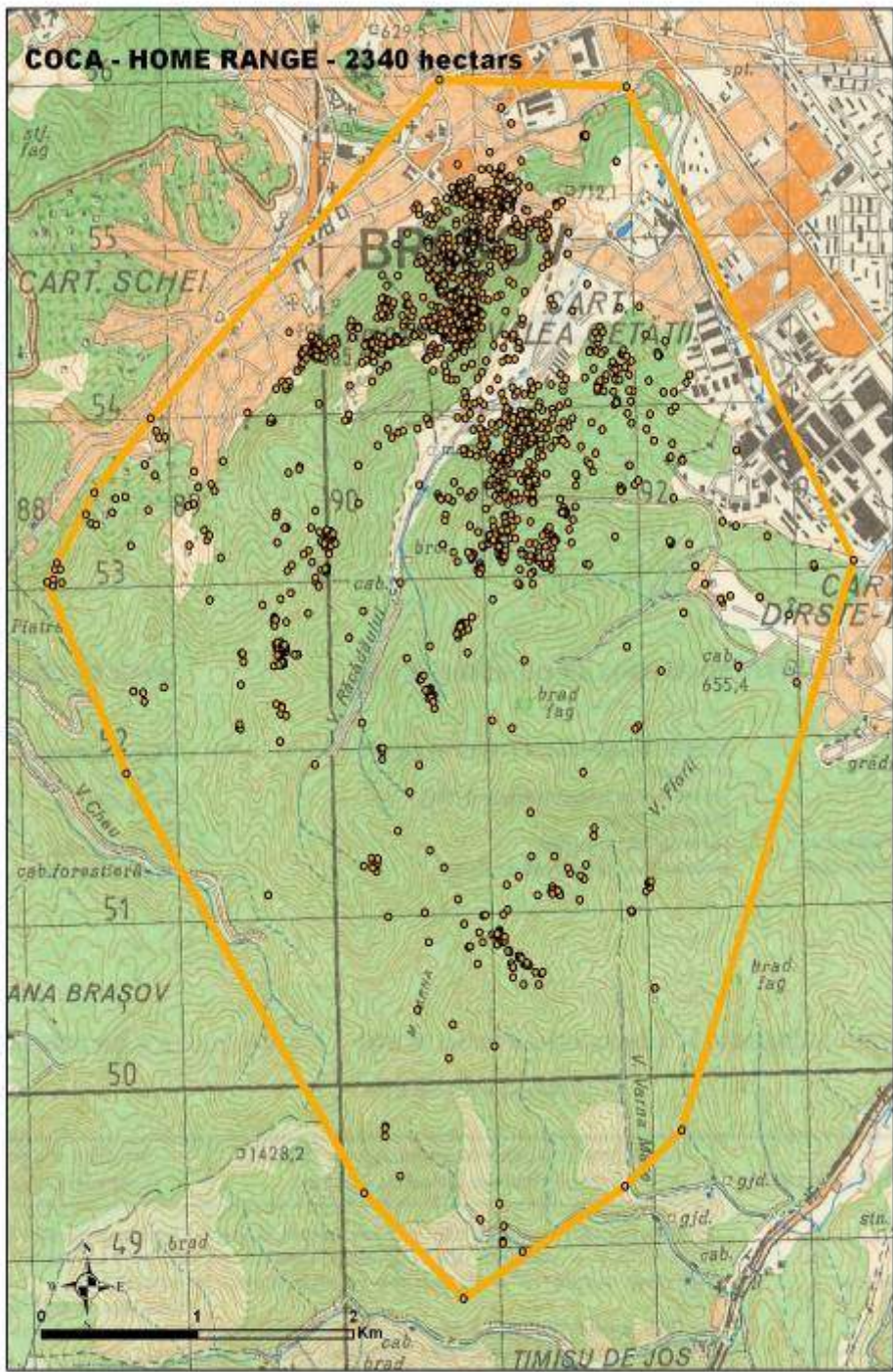


# Weakly activitis for bear behavior in Sinaia

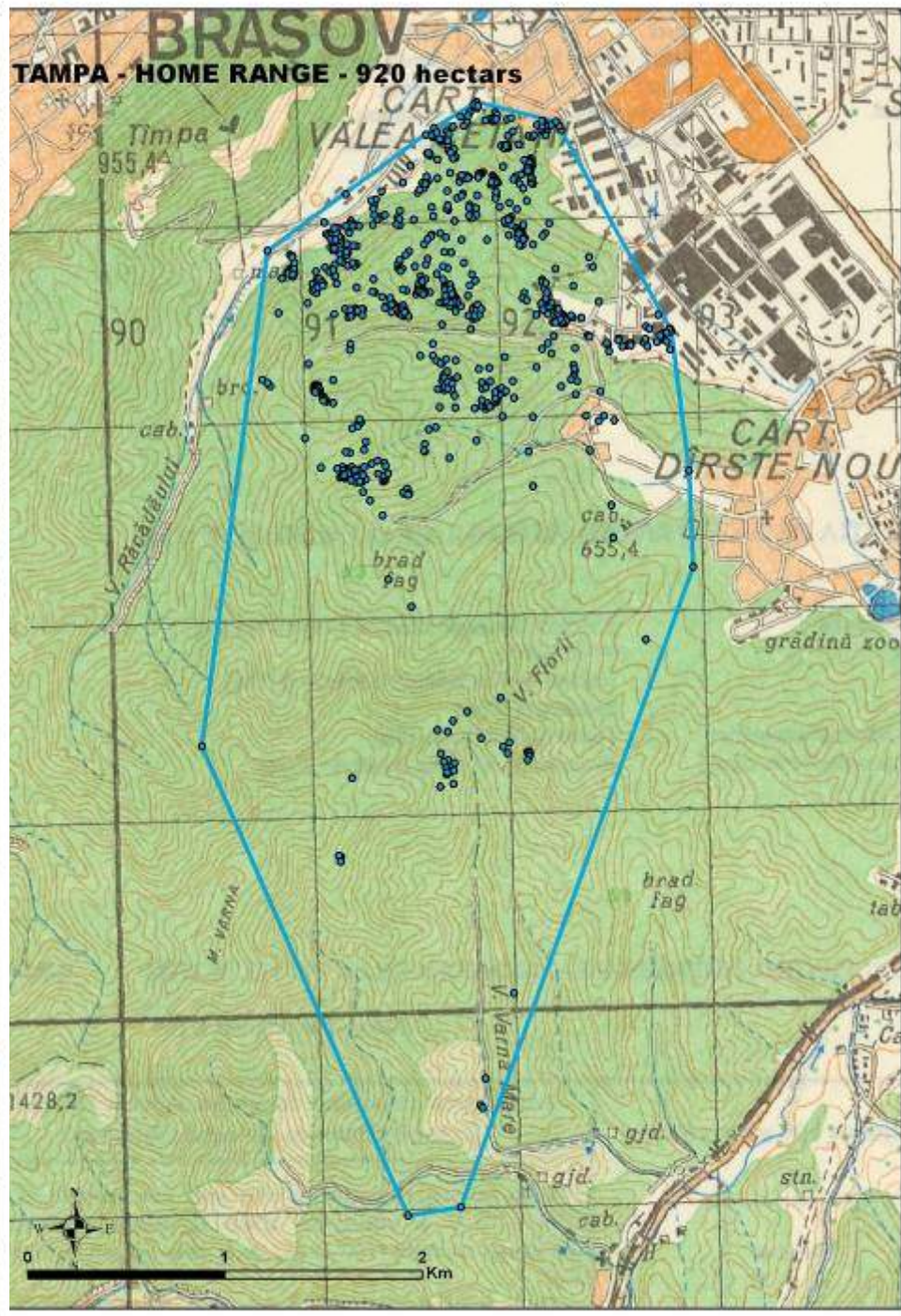




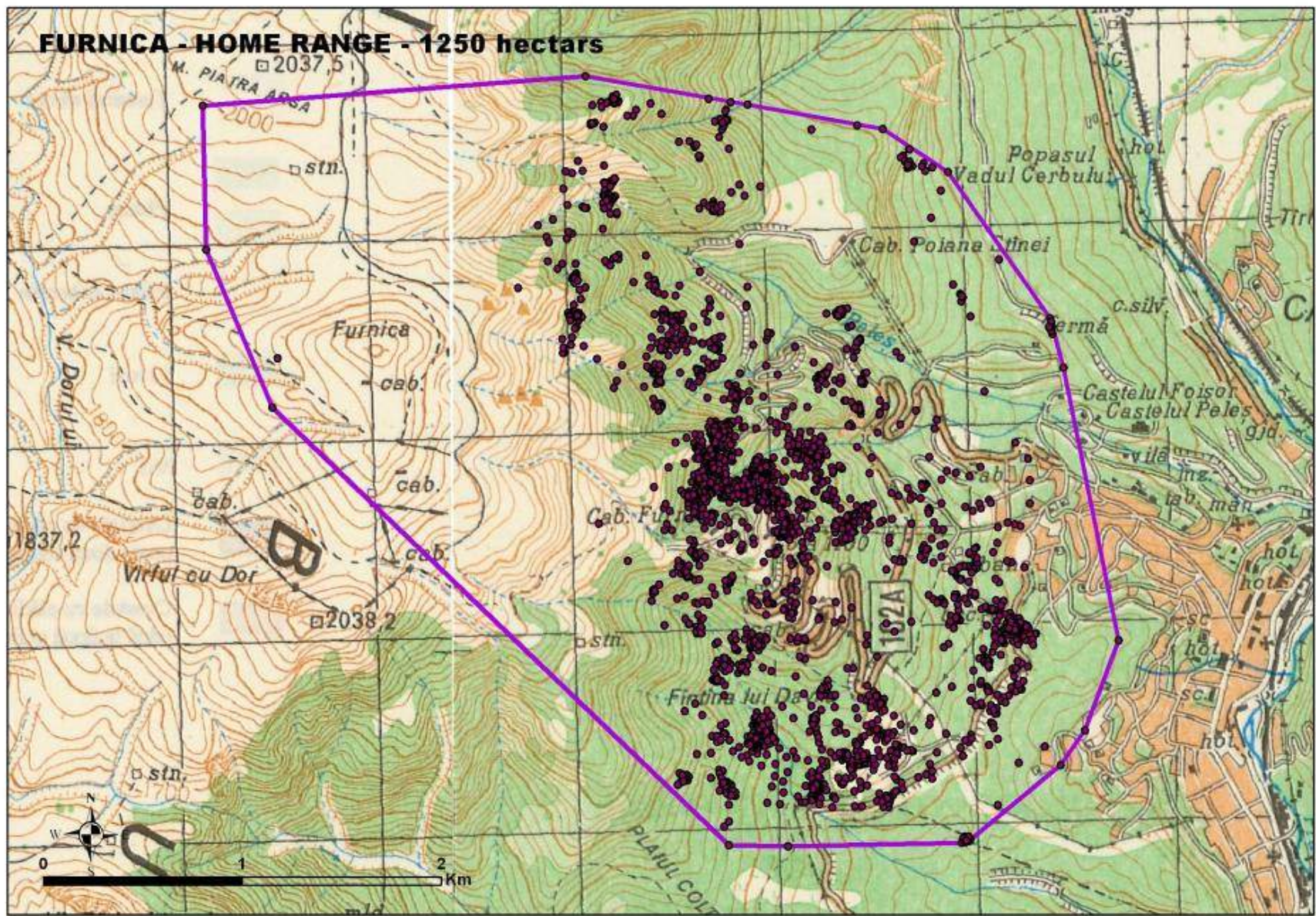
**COCA - HOME RANGE - 2340 hectares**



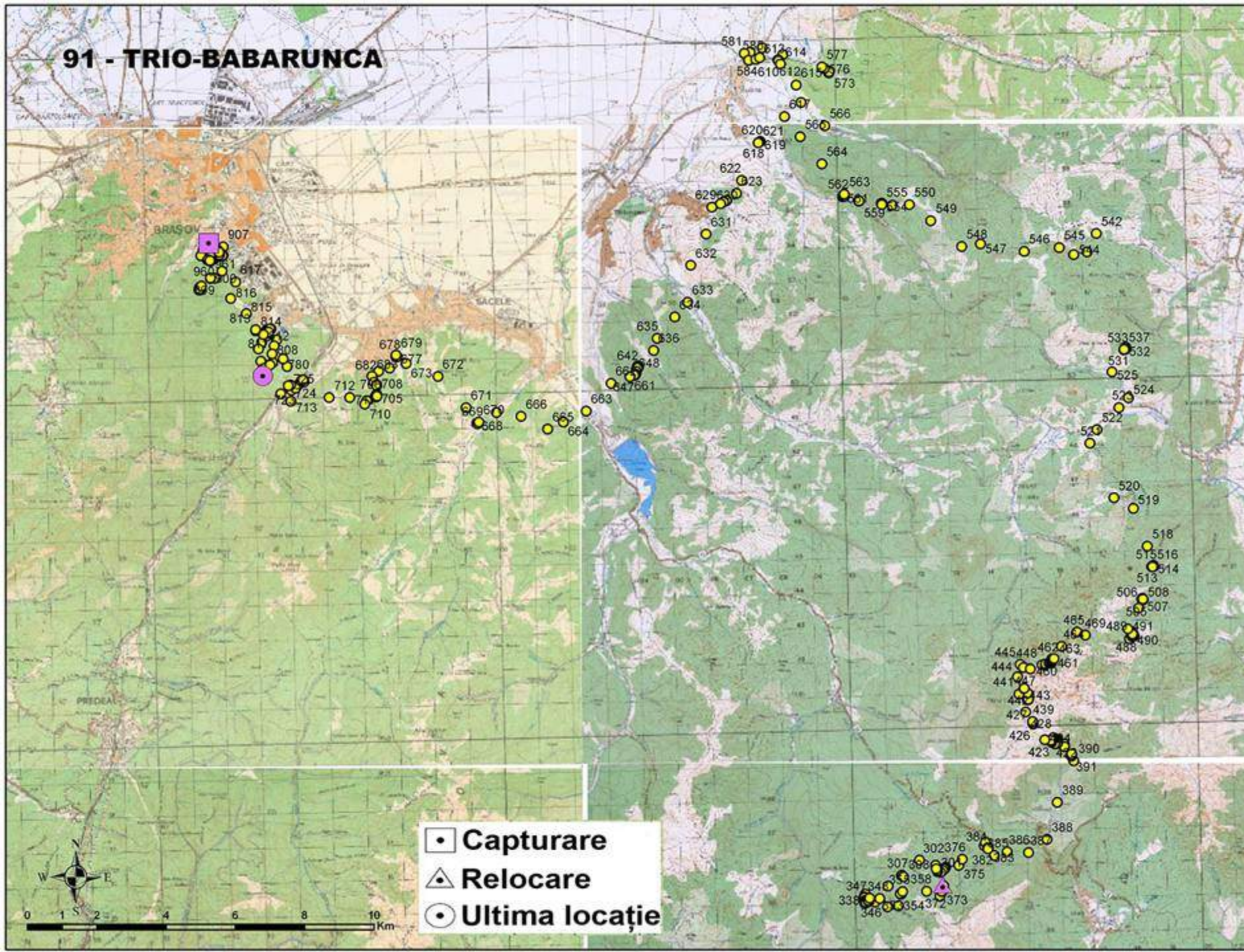
**TAMPA - HOME RANGE - 920 hectares**



# FURNICA - HOME RANGE - 1250 hectares



# 91 - TRIO-BABARUNCA



- Capturare
- △ Relocare
- Ultima locație



# Main results

---

- \* Bears territories – can be useful for bears evaluation
  - \* New information for bear behaviour
  - \* Relocated animals – 72 bears
  - \* Change of the garbage management
  - \* Change the public and authorities opinion
  - \* Management plan for habituated bears
-









***Thank you for attention!***