

Floristic inventories in the Mercantour National Park

Presentation of the flora inventory protocol and its application to preserve patrimonial species

Présentation :
Laurent Martin-Dhermont,
Sylvie Claudon
PN Mercantour



Berardia subacaulis



Contents



Carex bicolor

- 1 - Floristic context
- 2 - Definition of the project
- 3 - Methodology
- 4 - Protocol implementation
- 5 - Results, season 2010
- 6 - Example of an application

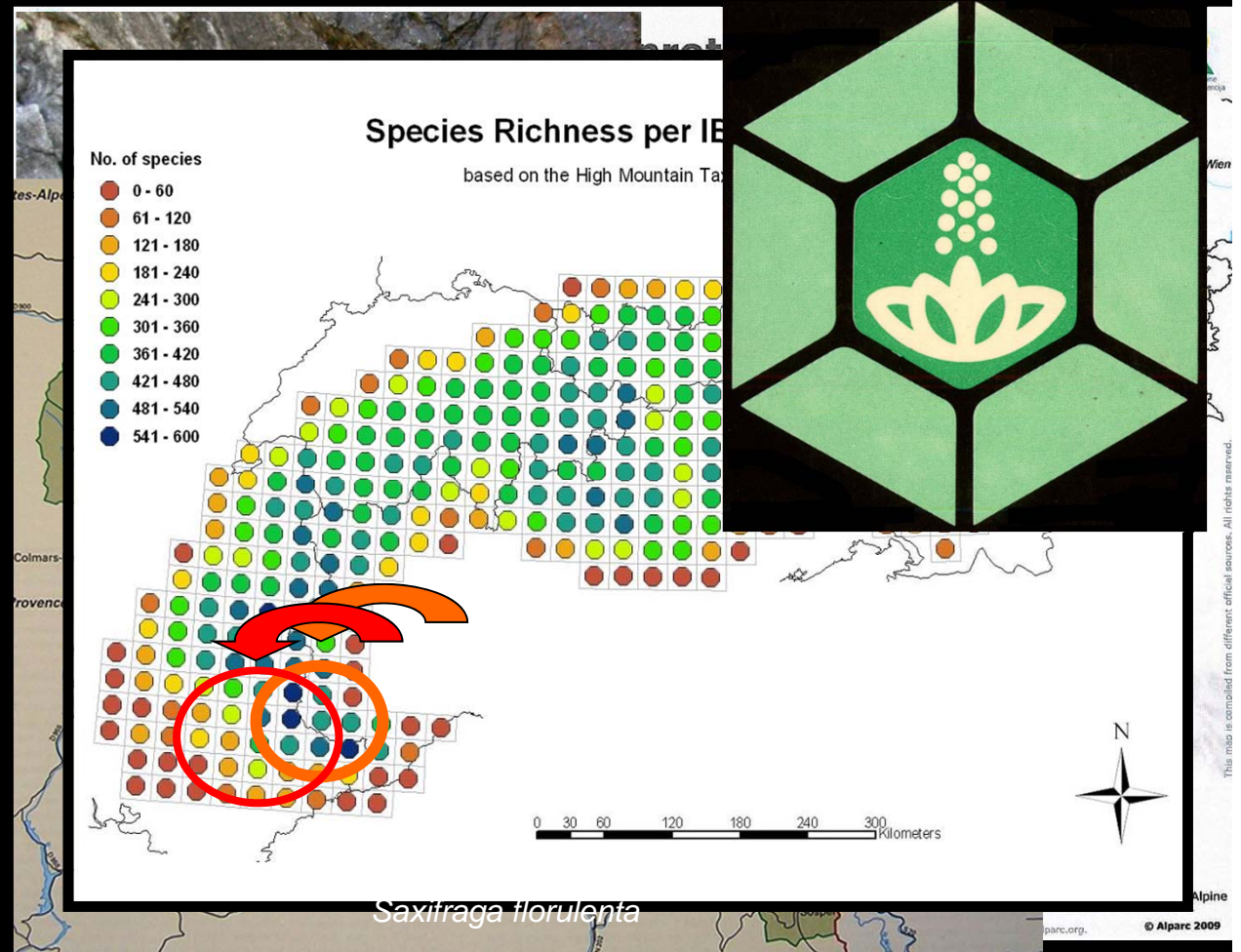
1 – Floristic context

Considerable floristic diversity : approximately **2000 identified plant species**.

An original flora :
32 endemic species



The massif of Mercantour :
**A Biodiversity
« hot spot »**



2- Definition of the project

« **Identify and look for the remarkable species in the national park.** »

It is also about setting up an **assessment tool for the floristic patrimony** which will enable us to answer the following questions :

- «*how many protected species are there in the National Park ?* »
- «*Where are the species listed in the annex IV.b of the Habitats Directive for the implementation of Natura 2000 to be found?*»
- «*Where are the conservation issues of a national Park ?*»



Lilium bulbiferum var. croceum

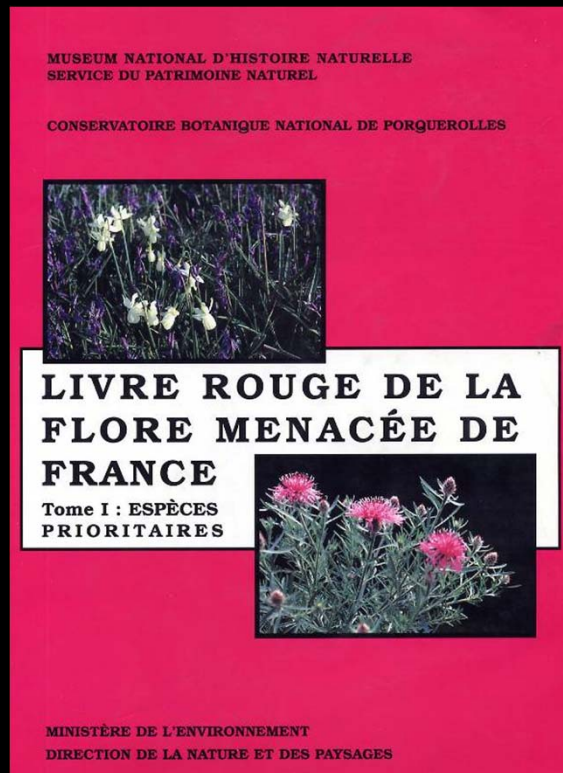
3 - Methodology ^{1/2}



Adonis pyrenaica

The choice of species to search for

Species identified by one or more of these factors were taken into account :



- **protection** :

International, national or regional regulation

- **rarity with conservation issues** :

The Red Book of the threatened flora of France.

- **recommendations of experts** :

Recognition of strong specificities : strict endemism, area limits...

3 - Methodology ^{2/2}

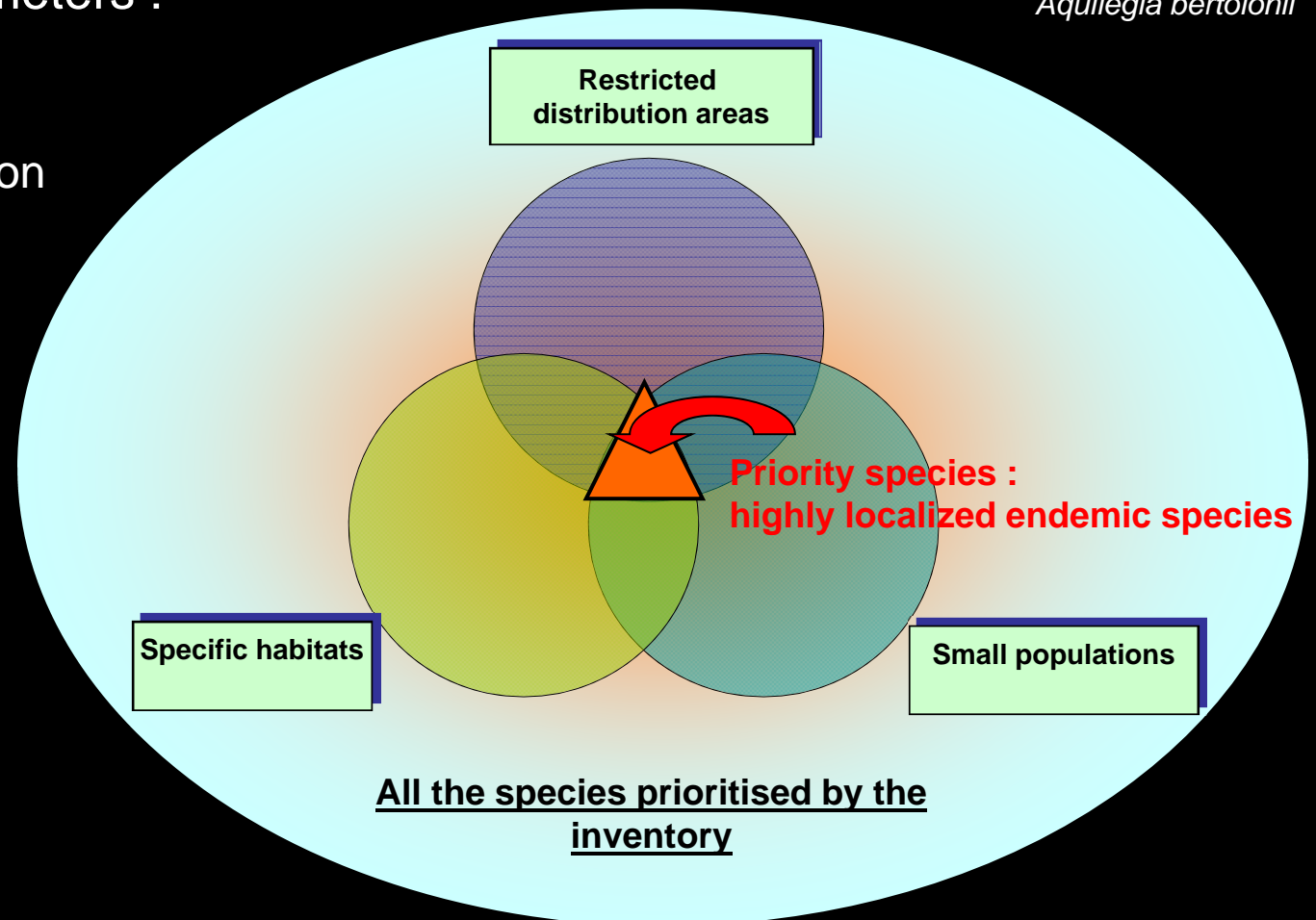


Aquilegia bertolonii

Definition of inventory priorities

Recognition of 3 parameters :

- the size of the distribution area.
- the habitat specificity.
- the population size.



4 –Protocol implementation

There were around 2000 species identified in the national park.

Of those, 230 species are considered by the inventory protocol of which 36 are prioritised.

For each of the 36 priority species in the national park, It was required to : :

- confirm the known location
- describe the stations
- search for new stations

The inventories began in 2000

Rangers are regularly trained to identify plant species



Iberis auroserica



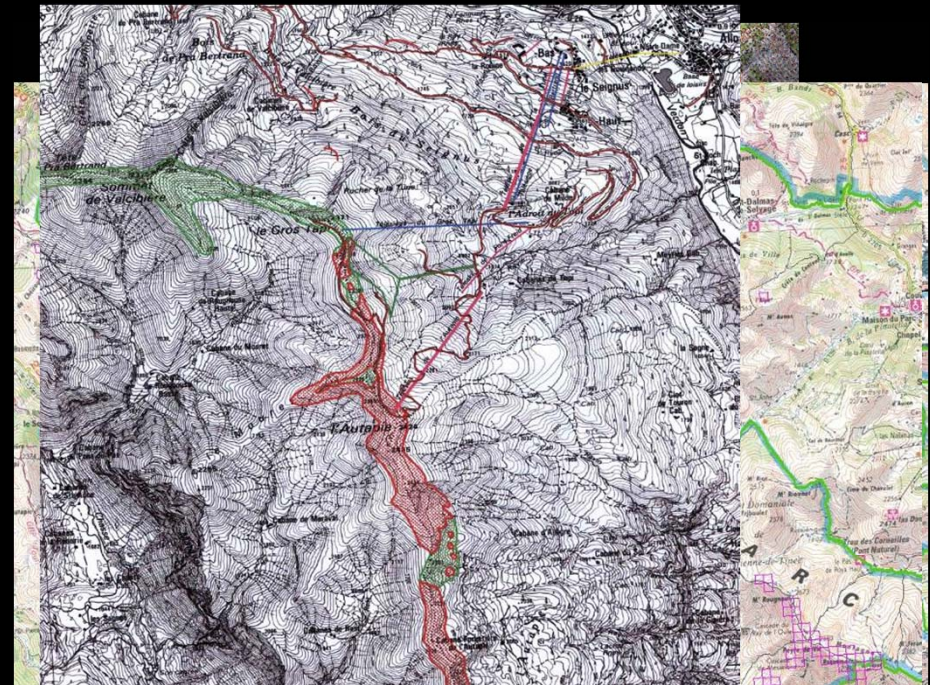
5 - Results, season 2010 -

Number of identification: **3600**

Improved knowledge of the patrimonial species localisation

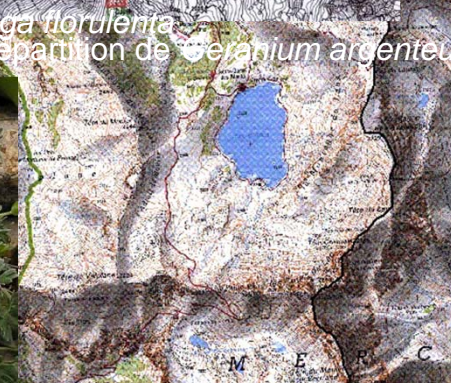
We are now able to provide, whenever the national park advice is requested :

- A definition of management procedures
- Works Authorisations



Localisation de *Saxifraga florulenta*

Carte de répartition de *Geranium argenteum*



Localisation d'*Androsace helvetica*

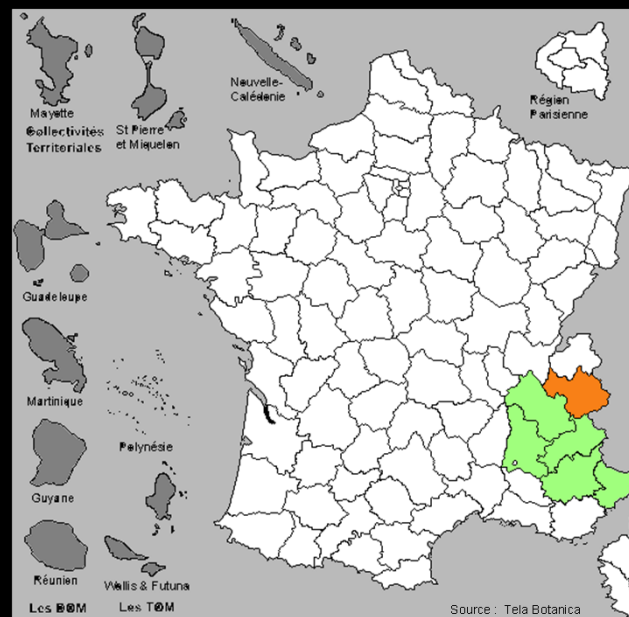
6 – An example of application

Compensatory measures during the construction of a new chairlift on the ski resort of La Foux d'Allos

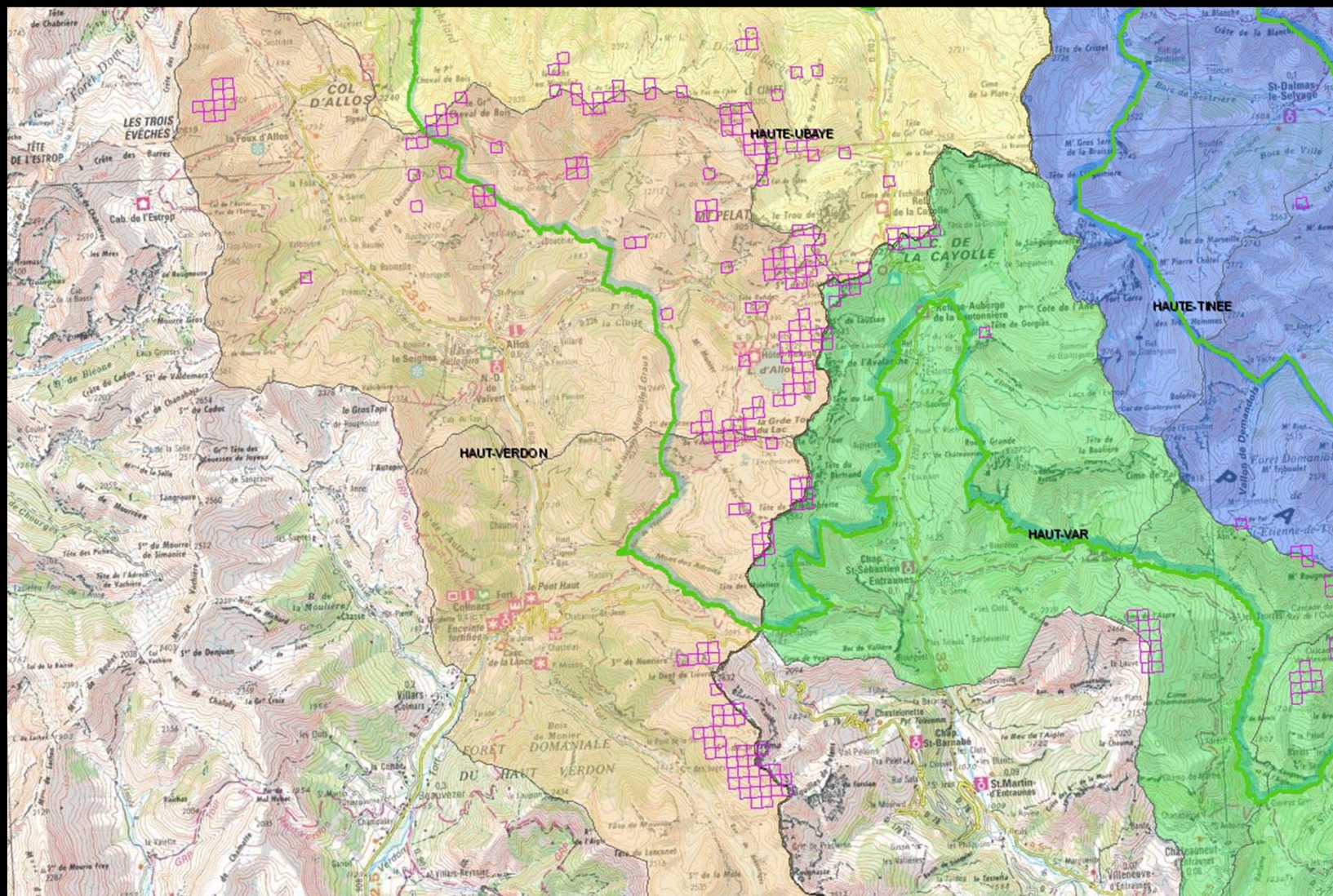




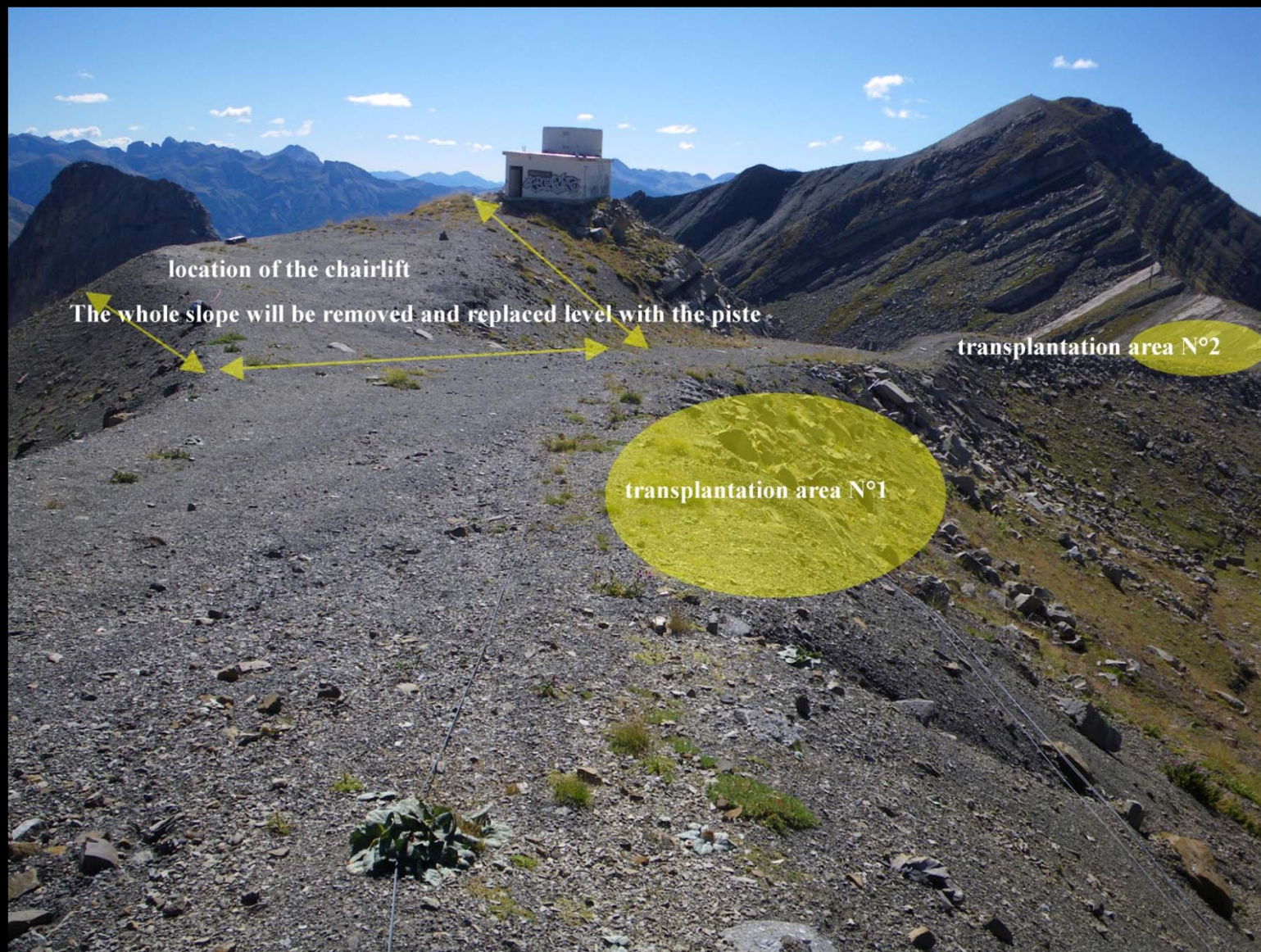
6 - *Berardia Subacaulis* in Haut Verdon 2/3



6 - Berardia Subacaulis in Haut Verdon 3/3



6 – Transplantation of *Berardia Subacaulis* 1/3



6 – Transplantation of *Berardia Subacaulis* 3/3



6 - Transplantation of *Bérardie Subacaulis* 3/3





Gymnadenia corneliana



Jovibarba allionii



Fritillaria tubiformis

THANK YOU FOR YOUR ATTENTION !



Veronica allionii



Lilium pomponium