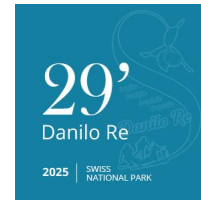


Memorial Danilo Re 2025

GUIDE

- 1) Programme
- 2) Ranger Seminar
- 3) Logistics
- 4) Alpine Buffet, Gala Dinner,
Lunch vouchers & Restaurants
- 5) Information for Athletes
- 6) Excursions





29th MEMORIAL DANILO RE 2025

Swiss National Park (Ftan/Scuol, Switzerland)

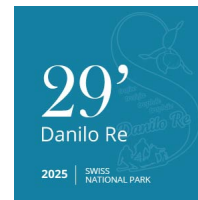
16th – 19th January 2025

PROGRAMME

Thursday, 16 th January 2025	Arrival & Registration of the Teams Opening Ceremony & Alpine Buffet
Friday, 17 th January 2025	ALPARC General Assembly Team Training Ranger Seminar
Saturday, 18 th January 2025	Sports Competitions Closing Ceremony & Medal Award, Gala Dinner
Sunday, 19 th January 2025	Optional Excursions

Thursday, 16th January 2025

15:00 - 16:15	Registration of the Teams Hotel Belvédère/ Chasa Nova (1 st floor)
16:15 - 17:00	Team Leaders Meeting Hotel Belvédère/ Chasa Nova (1 st floor)
16:00 - 17:00	Get-together of all participants (hot drinks) Parking according to signalisation
17:15	Performance Cor dal Parc Parking according to signalisation
17:30 - 18:00	Parade of the Teams Stradun – Via Bagnera – Schoolhouse Scuol
18:00 - 19:00	Opening Ceremony & Performance Cor dal Parc Schoolhouse Scuol
19:00	Alpine Buffet Schoolhouse Scuol



Friday, 17th January 2025

09:00 - 13:00	ALPARC General Assembly Hotel Scuol Palace, Nairs
08:00 - 11:30	Team training Cross-country skiing: Ftan Shooting: Ftan Ski mountaineering: Ftan > Prui Giant slalom: Prui/ Motta Naluns
12:00 - 14:00	Free time for lunch Local restaurants
14:00 - 18:00	Ranger Seminar Hotel Scuol Palace, Nairs Free time for dinner Local restaurants

Saturday, 18th January 2025

08:00	Ski mountaineering competition start Valley station cable car Prui, Ftan
09:45	Giant slalom competition start Pruì/ Motta Naluns
11:00 - 13:00	Lunch (vouchers) Various restaurants Motta Naluns, locations see map
13:30	Cross-country skiing competition start Ftan
14:30	Shooting competition start Ftan
18:30	Special gondola ride to Motta Naluns
19:30 - 0:30	Medal Award & Gala Dinner Restaurant La Motta, Motta Naluns

Sunday, 19th January 2025

08:30 - 12:00	Optional excursions in the region (guided ski tour, snowshoe hike, guided tour of mineral springs) Departure
---------------	---



MEMORIAL DANILO RE 2025 IN SCUOL
RANGER SEMINAR
Friday, January 17th, 2025, 14:00 - 18:00

Nothing is more constant than change
Change from the perspective of rangers and scientists

Programme

Welcome / Introduction to the seminar / Moderation

Laura Perl (ALPARC) & Raphael von Büren (Parc nazionale Svizzer)

14:00

Kindly come a few minutes in advance

Opening speeches

Peter Oggier, President ALPARC

Guido Plassmann, Director ALPARC

Alenka Smerkolj, Secretary-General Alpine Convention

ALPARC & the Alpine Convention: A shared vision through changing times

14:10

Laura Perl, Maria Tischler & Raphaël Lellouvier,
ALPARC & Permanent Secretariat of the Alpine Convention

14:25

Introduction of the hosting Park & Project Refotografia

Tamara Estermann & Claudio Irniger, Parc nazionale Svizzer, Switzerland

14:50

Worksite of ideas to build change

Dr. Luigina Armani, Parco Naturale Adamello Brenta, Italy

15:10

Forest Bathing – Embracing change with all your senses

Claus Lackerbauer, Nationalpark Kalkalpen, Austria

15:30

Changing balances over time in Mont Avic Natural Park – How the Park tries to mediate the conflict between nature conservation and human activities

Giada Cignetti, Alessandro Durando & Pietro Ruggeri, Parco Naturale Mont Avic, Italy

15:50

Coffee Break

16:20

„The world is changed“ – Influence of land use, climate change and disturbances on forest ecosystems

Dr. Hanna Kastein, Nationalpark Berchtesgaden, Germany

16:40

From hunter to protector of nature – Changes in Triglav National Park ranger's work

Jernej Legat & Miha Marolt, Triglav narodni park, Slovenia

17:00

Tell me what you are looking for and I will tell you who you are – The evolution of mountain huts and mountain visitors in five questions (plus one)

Irene Borgna & Costanza Luconi, Aree Protette delle Alpi Marittime, Italy

17:20

Nature in transition – Visitors on a journey of discovery

Oliver Daxböck, Nationalpark Gesäuse, Austria

17:40

Deglaciation in Vanoise - Novelty? Continuities and perspectives

Etienne Emorine, Parc national de la Vanoise, France

18:00

Conclusion & End of the seminar

ALPARC & Parc nazionale Svizzer

3) Logistics and Digital map

The 29th edition of the Memorial Danilo Re will take place in Scuol, in the Engadine, Switzerland. Scuol is located on the mountain river Inn, in the south-eastern part of Switzerland, close to the border with Austria. The meetings will take place at locations in the immediate vicinity of Scuol. All locations are marked on the two maps below.

Additionally, the map is also available online via the QR-code.



[Digital map Danilo Re 2025](#)

Arrival

By public transport: Scuol-Tarasp railway station (travelling from Zurich via Landquart)

By car: from the north via the Inntal motorway/E60, from the east via the Bolzano-Merano-Nauders, from the south via Como and the Maloja Pass, from the west (Zurich-Landquart) via the Vereina car transport (<https://www.rhb.ch/en/car-transporter>).

Registration, Meeting Team Leaders, Opening Ceremony & Alpine Buffet

The registration of the participants takes place at the seminar-house “Chasa Nova” opposite the Hotel Belvédère. At 4:15 pm all Team Leaders meet for a short exchange (first floor). The Opening Ceremony starts at 5:15 pm with a performance by the *Cor dal Parc* in front of the hotel Belvédère. Afterwards, the parade of the teams follows to the Scuol schoolhouse where the opening ceremony continues and the Alpine Buffet takes place.

Hotel Belvédère

Website: [Hotel Belvedere Scuol / Engadine](#)

Location: Stradun 330, 7550 Scuol (<https://maps.app.goo.gl/pNhbLg1tLYcFqcv49>)

Schoolhouse Scuol

Location: Bagnera 171, 7550 Scuol (<https://maps.app.goo.gl/Td3cNDWVRzmMHhL17>)

General Assembly and Ranger Seminar

The ALPARC General Assembly as well as the Ranger Seminar take place in the Hotel Scuol Palace. The **Ranger Seminar starts at 2:00 pm** sharp and as the program is very tight we kindly ask you to be on time.

Hotel Scuol Palace

Website: [Scuol Palace](#)

Location: Nairs 500, 7550 Scuol (<https://maps.app.goo.gl/Jk9f2SwREXGvP3y6>)

Sport venues

The sport competitions take place in Ftan. Have a look at the maps below to get an overview of the area and to find out where the different competitions take place.

Gala Dinner

The Gala Dinner including the Medal Award takes place in the Restauran La Motta, Motta Naluns. A special gondola ride to the restaurant at Motta Naluns is scheduled for 6:30 pm.

Restaurant La Motta

Website: [La Motta Bergrestaurant | Bergbahnen Scuol](#)

Location: Bergstation Motta Naluns, 7550 Scuol (<https://maps.app.goo.gl/RpZAsuqQnM7JCm2J9>)

Gondola to Motta Naluns

Location: Via da Ftan 495, 7550 Scuol (<https://maps.app.goo.gl/KU3KfbDLigSGK8uj6>)

29th Memorial Danilo Re | 16th - 19th January 2025 Swiss National Park / Scuol

Events

- 1** Hotel Belvedere / Chasa Nova
Registration, Team Leaders Meeting
Start of the Parade
- 2** Community Building / Gemeindehaus Scuol
Opening Ceremony
- 3** School Building / Schulhaus Scuol
Alpine Buffet
- 4** Hotel Scuol Palace
ALPARC General Assembly
Ranger Seminar
- 5** Restaurant am Berg: La Motta
Closing Ceremony & Medal Award
Gala Dinner

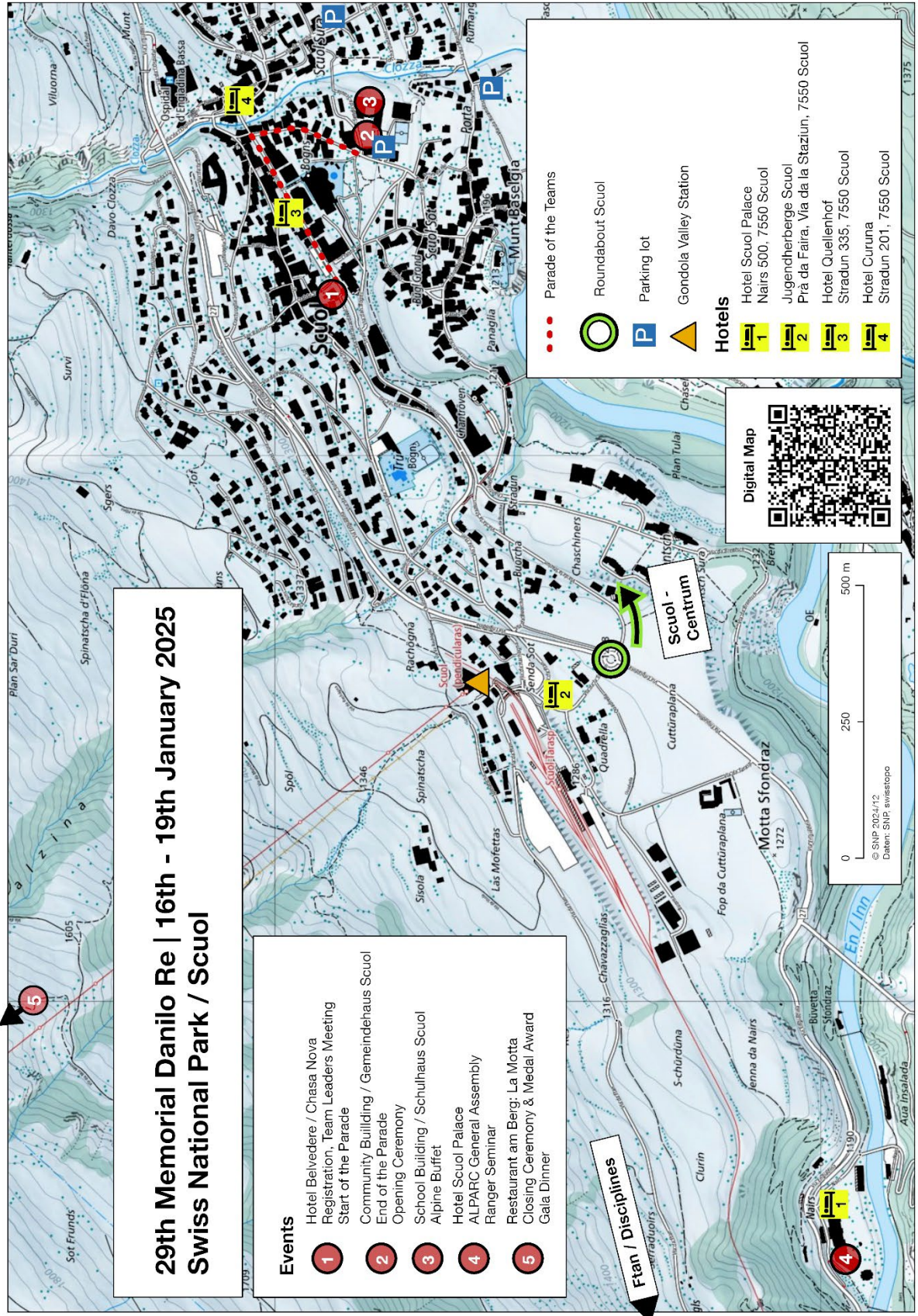
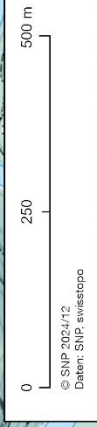
Ftan / Disciplines

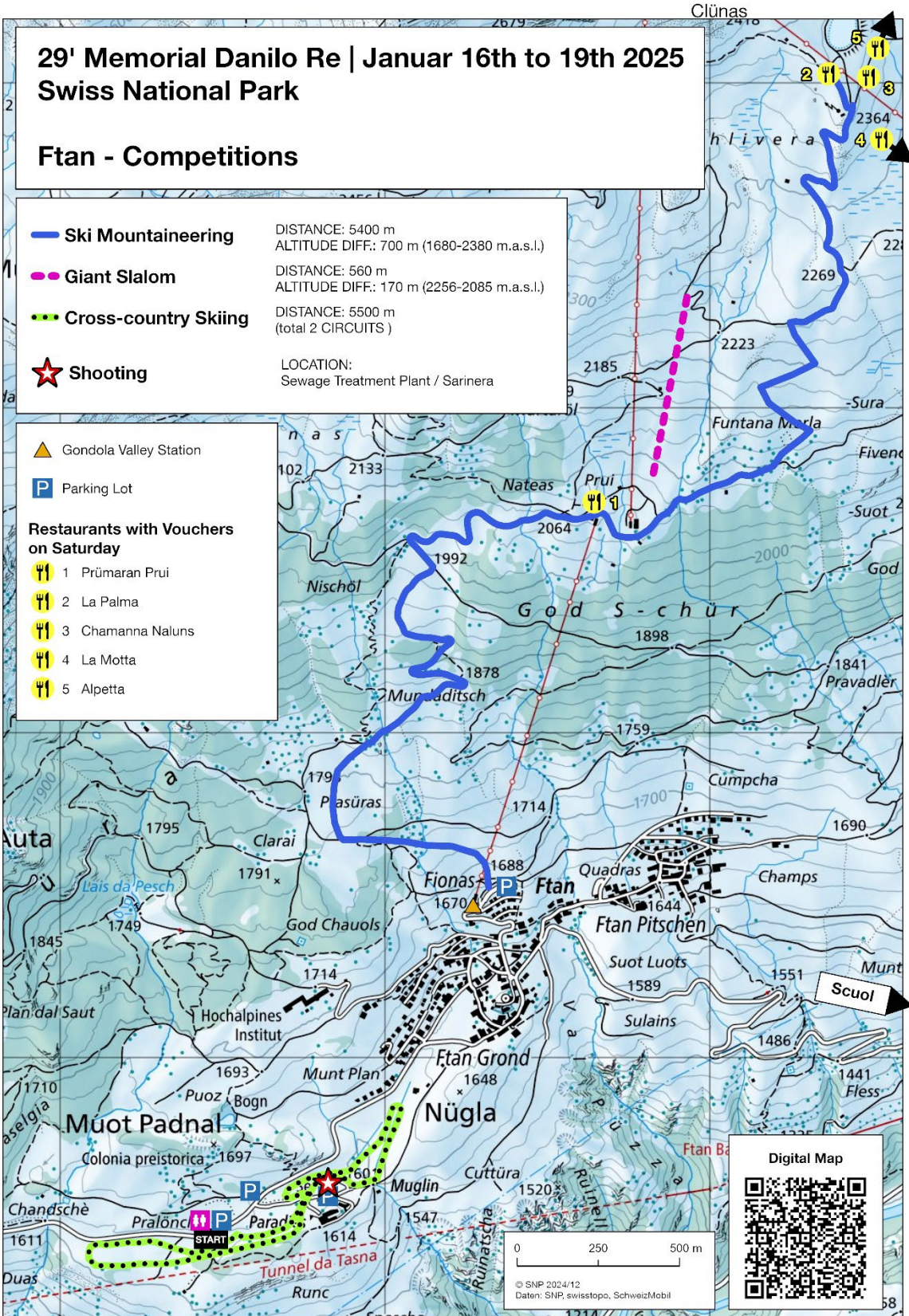
Scuol -
Centrum

- Parade of the Teams
- Roundabout Scuol
- Parking lot
- Gondola Valley Station

Hotels

- 1 Hotel Scuol Palace
Nairs 500, 7550 Scuol
- 2 Jugencherberge Scuol
Pia da Faira, Via da Staziun, 7550 Scuol
- 3 Hotel Quellenhof
Stradun 335, 7550 Scuol
- 4 Hotel Curuna
Stradun 201, 7550 Scuol





4) Alpine Buffet, Gala Dinner, Meal vouchers and Restaurants in Scuol

Alpine Buffet

The Alpine Buffet will take place on Thursday evening. We are happy if all participating parks and organisations bring a specialty from their region. Dishes will be provided, but if you need something special for your culinary contribution, we kindly ask you to provide it yourself. If you will contribute a warm dish/beverage, an electricity connection can be provided.

Dinner on Friday Evening

Dinner on Friday evening is organized individually. There is an option to dine at the Indian restaurant located in the Scuol Palace Hotel. Please note that reservations are required for this restaurant. If you wish to eat there, we kindly ask you to make a reservation via email at info@nationalpark.ch, including the number of vegetarian menus you would like.

Additionally, Scuol offers a wide variety of restaurants to choose from. For more information and a complete list of restaurants in Scuol, please visit: [Restaurants Scuol](#)

Lunch on Saturday

All participants will receive a lunch-voucher, which is included in the registration fee. The voucher can be redeemed on Saturday at lunchtime in the restaurants within the Motta Naluns ski area. Participants without skis can easily access the Restaurant Prümeran Prui via the chairlift. All other restaurants in the ski area are accessible only to those on skis. The locations of the restaurants are marked on the map above.

Gala Dinner

The Gala Dinner will take place on Saturday evening at the restaurant La Motta. The restaurant is located in at the mountain station of Motta Naluns. To get there a special gondola ride is scheduled for 6:30 pm. The ride back to the valley will be at 0:30 am.

5) Information for Athletes

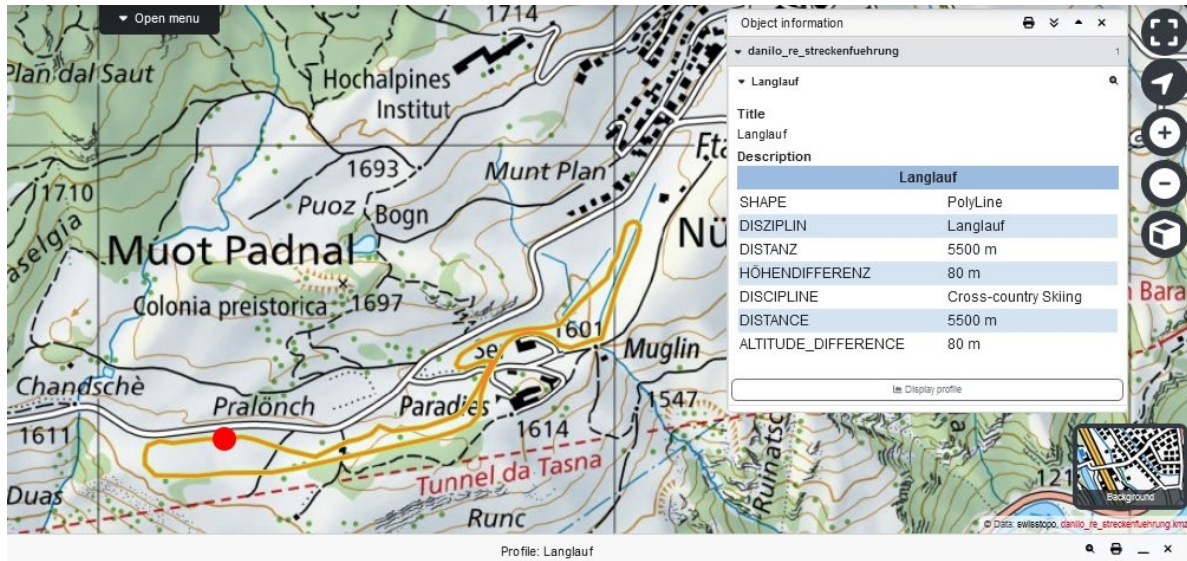
We are delighted that you are taking part in the competitions!

On Friday morning you will have the opportunity to train again and have a look at the slope. The following training sessions are planned for the four disciplines:

- **Skiing:** A trial run is scheduled from 8:30 AM to 11:30 am.
- **Ski mountaineering & Cross-country skiing:** Both courses are marked with flags, training will be available from 8:00 am to 11:00 am.
- **Shooting:** The shooting range will be supervised from 8:00 am to 11:00 am. A dedicated shooting training session for participants of the General Assembly is also planned for Saturday morning (exact timing to be announced).

Please find below more information about the ski mountaineering and the cross-country skiing tracks.

Cross-country skiing



Ski mountaineering



7) Excursions

On Sunday morning, you have the opportunity to participate in excursions. You can explore the area either on a ski tour or with snowshoes, or you can join a guided tour of the mineral springs in Scuol. Some participants have already signed up for an excursion during registration.

If there have been any changes to your registration or if you would like to sign up for an excursion, please send an email to info@nationalpark.ch.

Please note that the tours are still subject to change due to the avalanche situation, snow and weather conditions!