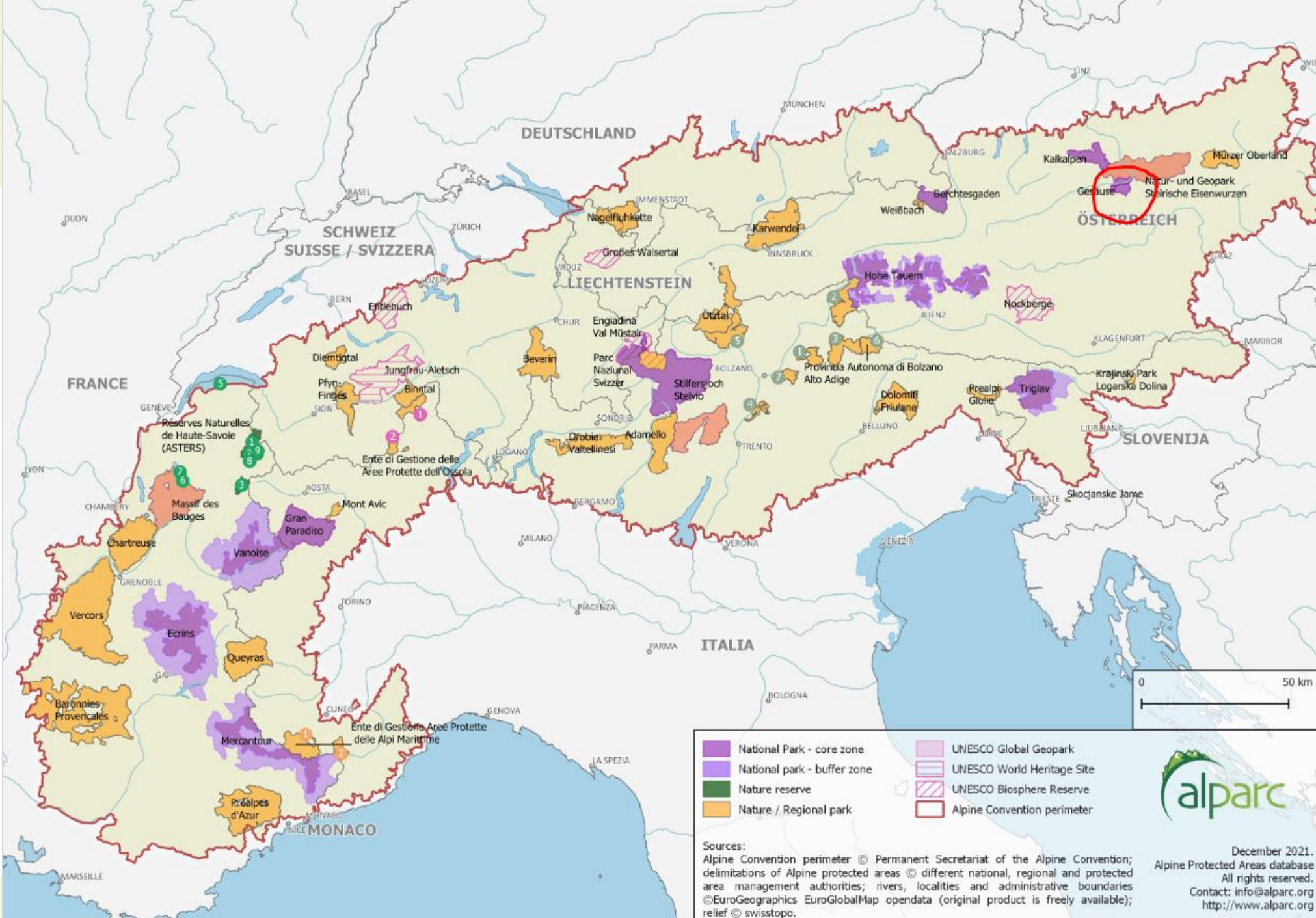





# ***Gesäuse National Park***

- ***How we have experienced the impacts of climate change in 2022***
- ***Digital GIS tool supporting field work – a best practice***



	National Park - core zone		UNESCO Global Geopark
	National park - buffer zone		UNESCO World Heritage Site
	Nature reserve		UNESCO Biosphere Reserve
	Nature / Regional park		Alpine Convention perimeter

Sources:  
 Alpine Convention perimeter © Permanent Secretariat of the Alpine Convention;  
 delimitations of Alpine protected areas © different national, regional and protected area management authorities; rivers, localities and administrative boundaries ©EuroGeographics EuroGlobalMap opendata (original product is freely available); relief © swisstopo.

December 2021.  
 Alpine Protected Areas database  
 All rights reserved.  
 Contact: info@alparc.org  
<http://www.alparc.org>

# Gesäuse National Park

Austria's youngest national park

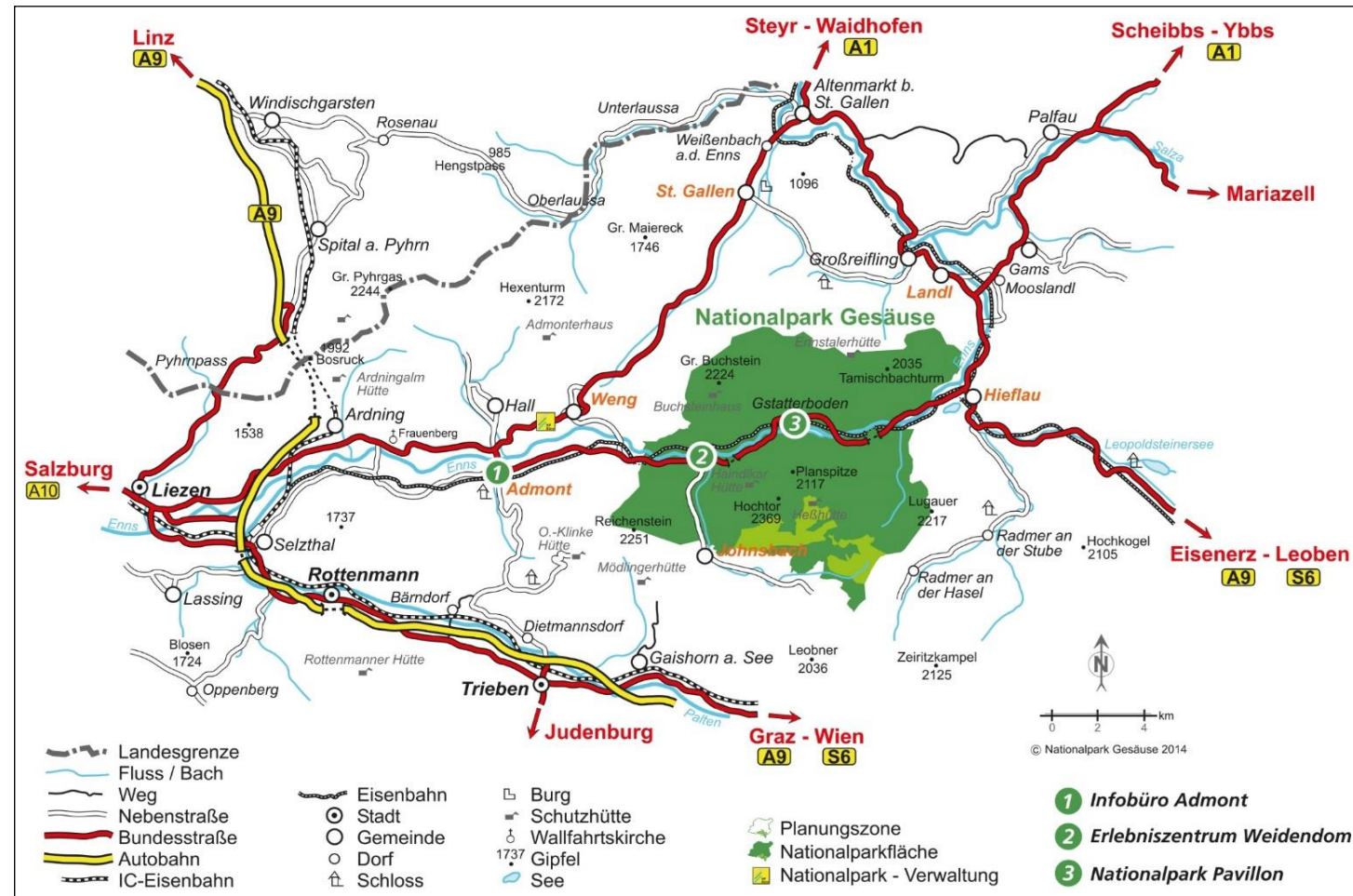


protected area  
IUCN Cat. II  
Natura 2000

established  
26. Oktober 2002

total area  
12,038 ha

land owner  
99,3 %  
Steiermärkische  
Landesforste



# *Extreme storm event on 18. August 2022*

- *Not forecasted*
- *Just a few minutes*
- *Peaks of 108 km/h*
- *Road closure for 3 weeks*
- *Several trails and park infrastructure destroyed*









# *What now?*

## *Conflicting nationalpark aims*



- *Aim: natural process protection*  
-> *leave the windthrow as part of nature*
- *Aim: visitor experience and education*  
-> *remove the broken trees and rebuild the thematic trails*

*Our solution:*

*Redesign the thematic trail and let the visitors experience natural succession of a windthrow area*



# Field Maps

*Digital tool for immediate documentation in the field*

- *Monitoring*
- *Protocols*
- *Statistics*



# *Winter park wardens*

*A practical example*

*Most popular skitouring routes  
Focus on weekends and holidays  
Or if there is fresh snow*

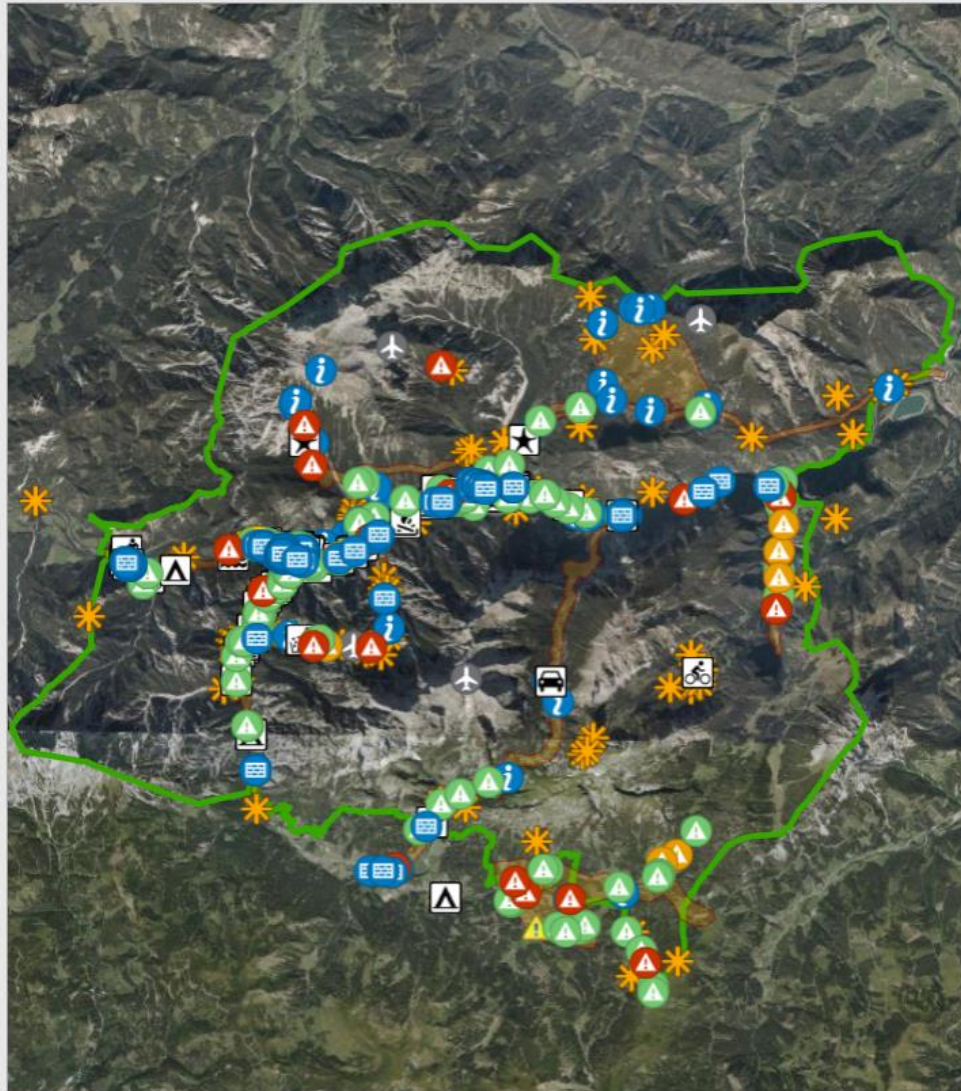
*Protocols in the field:*

- *Observations*
- *Avalanches*
- *Defects*
- *Interventions*
- *Talks with visitors*
- *Flights*



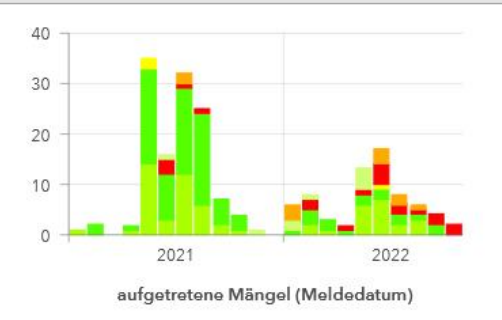
# Gebietsaufsicht Operations Dashboard (Sommer)

- ⚠ **Abgestorbene Fichte**  
Gemeldet am 25.10.2022, 12:29 von npg-alexander.maringer
  - ⚠ **Entwurzelte Bäume**  
Gemeldet am 1.10.2022, 14:02 von npg-christoph.spanner
  - ⚠ **Bruchstelle**  
Gemeldet am 25.9.2022, 10:54 von npg-walter.durchschlag
  - ⚠ **Gefahrenstelle im Gseng**  
Gemeldet am 3.9.2022, 16:59 von npg-barbara.bock
  - ⚠ **Wilder John ab Riesenschaukel unpassierbar.**  
Gemeldet am 3.9.2022, 16:57 von npg-barbara.bock
  - ⚠ **Hinweis Weg zu spät**  
Gemeldet am 3.9.2022, 14:26 von npg-alexander.maringer
  - ⚠ **Steine auf Weg**  
Gemeldet am 24.8.2022, 16:27 von npg-stephan.ulz
  - ⚠ **Kugelspieltische verschmutzt**  
Gemeldet am 18.8.2022, 14:52 von npg-christoph.spanner
- Letzte Aktualisierung: vor 24 Minuten



Source: Esri, DigitalGlobe, GeoEye, Earthstar Geographics, CNES/Airbus DS, USDA, USGS, AeroG... Powered by Esri

<b>Insgesamt erfasst</b>	
<b>210</b> <small>2017: 85   2018: 138   2019: 158   2020: 135 Dienste</small>	<b>187</b> <small>2017: 230   2018: 157   2019: 192   2020: 173 Gespräche</small>
<b>6</b> <small>2017: ubk   2018: 16   2019: 16   2020: 6</small>	<b>38</b> <small>2017: 21   2018: 64   2019: 52   2020: 57 Außenhau</small>
<b>14</b> <small>2017: ubk   2018: 6   2019: 19   2020: 15</small>	<b>6</b> <small>2017: 3   2018: 11   2019: 7   2020: 3 Radfahrer</small>
<b>22</b> <small>2017: 15   2018: 61   2019: 28   2020: 38</small>	<b>2</b> <small>2017: 4   2018: 7   2019: 0   2020: 1 Feuerballen</small>
<b>9</b> <small>2017:   2018: 8   2019: 6   2020: 5 Fahrverbot</small>	<b>7</b> <small>2017: 24   2018: 118   2019: 33   2020: 42 Fälle</small>
<b>14</b> <small>2017: ubk   2018: 23   2019: 7   2020: 32</small>	<b>2</b> <small>2017: ubk   2018: 3   2019: 9   2020: 3</small>
<b>2</b>	<b>5</b>
	<b>1</b>



***Thank you for your attention!***

